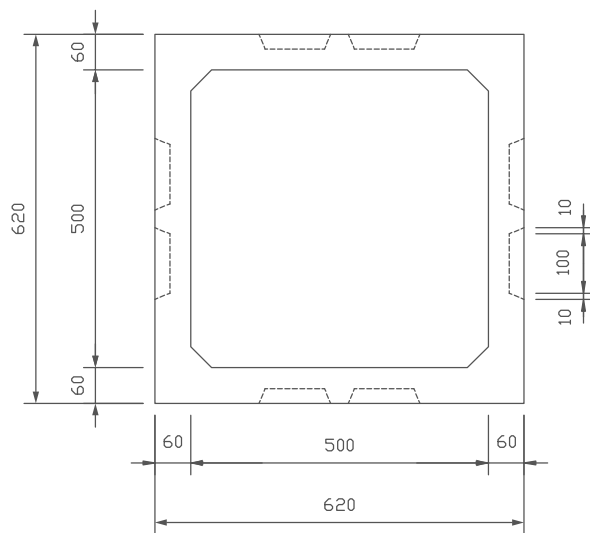
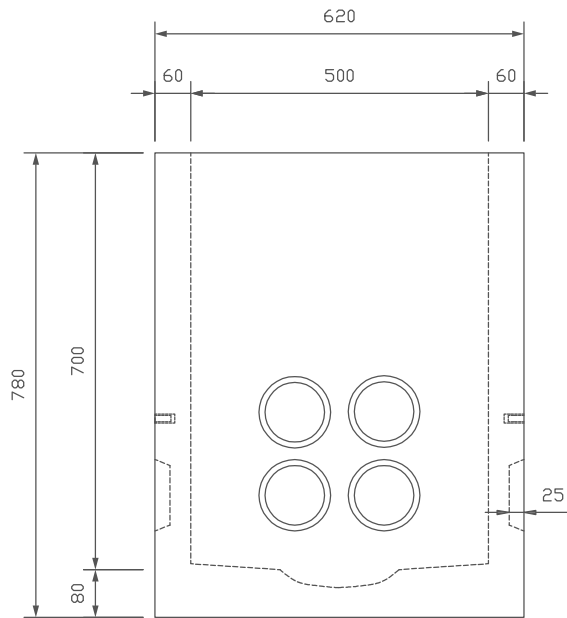


# ハンドホール

EA型

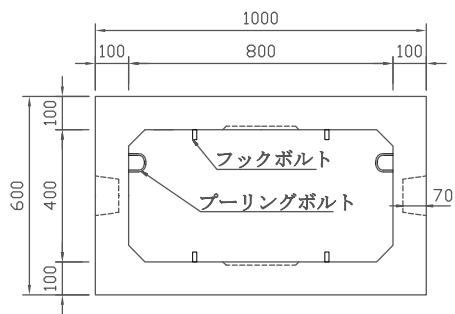
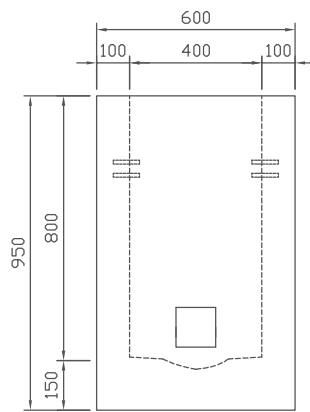
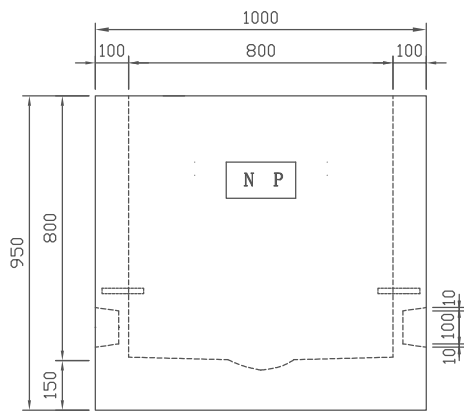
参考質量 343kg



# ハンドホール

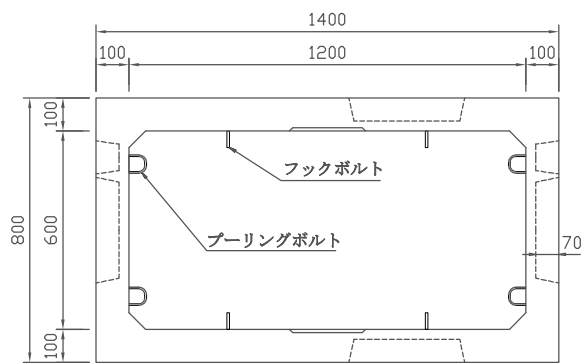
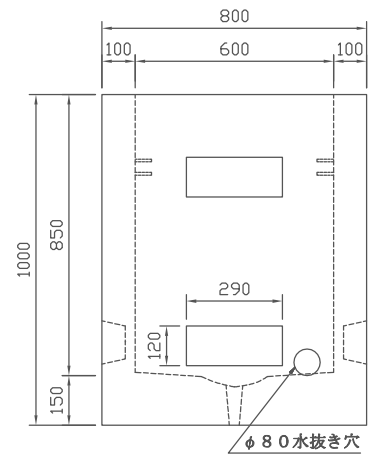
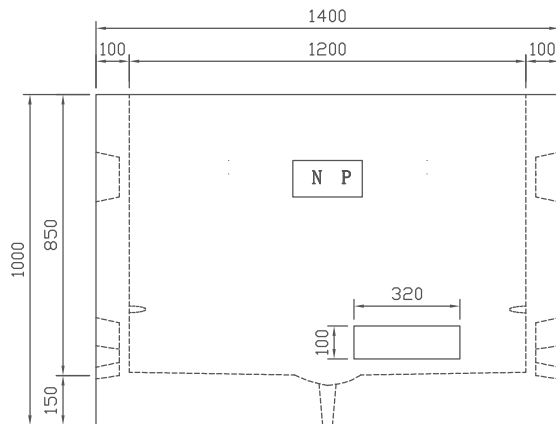
CA型

参考質量 773kg



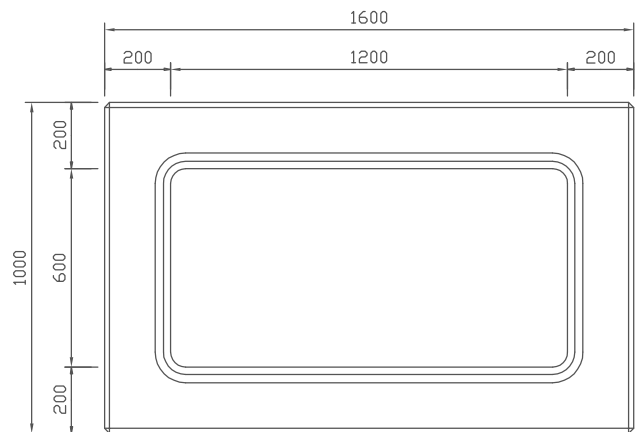
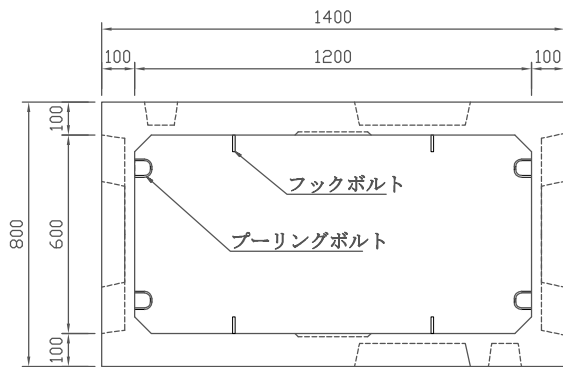
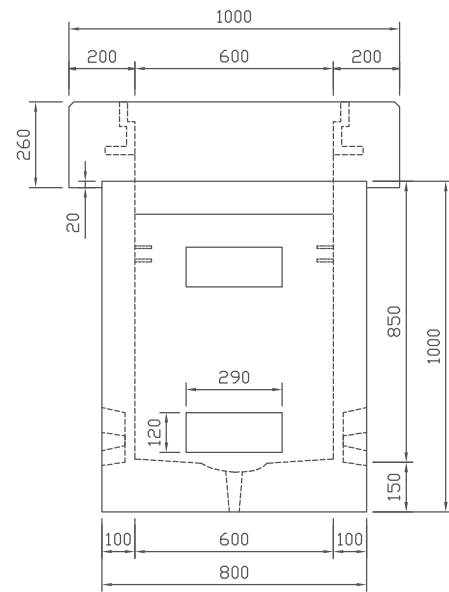
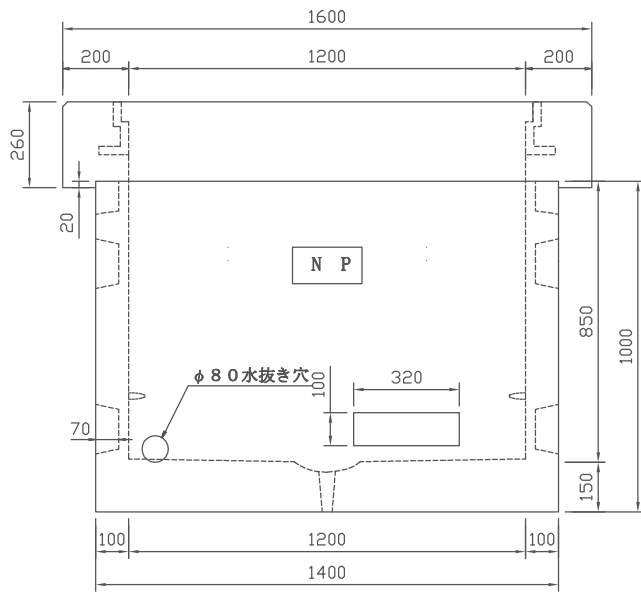
# ハンドホール

CD型 参考質量 1217kg



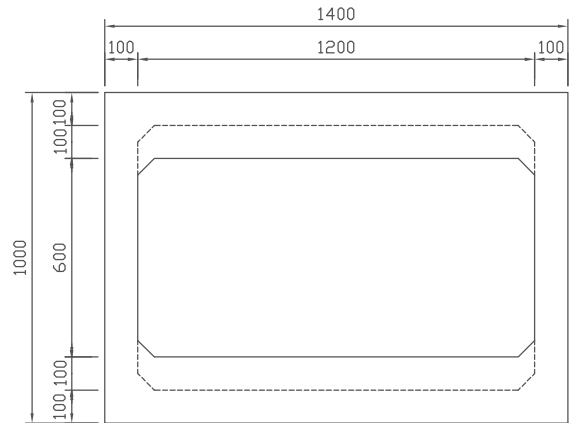
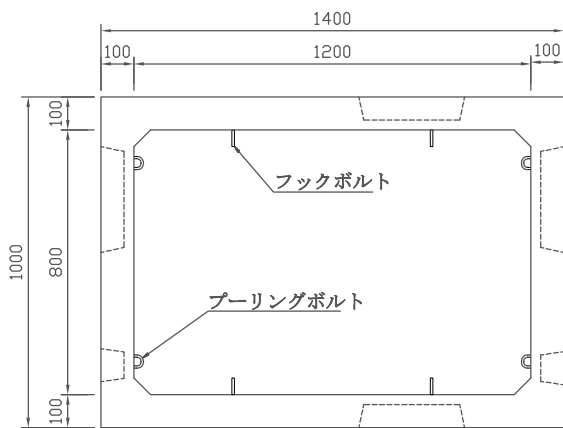
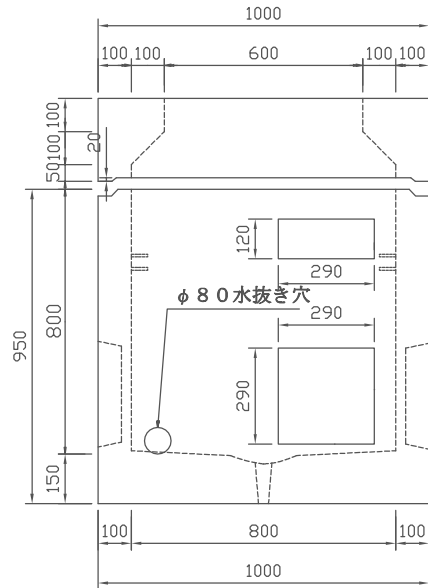
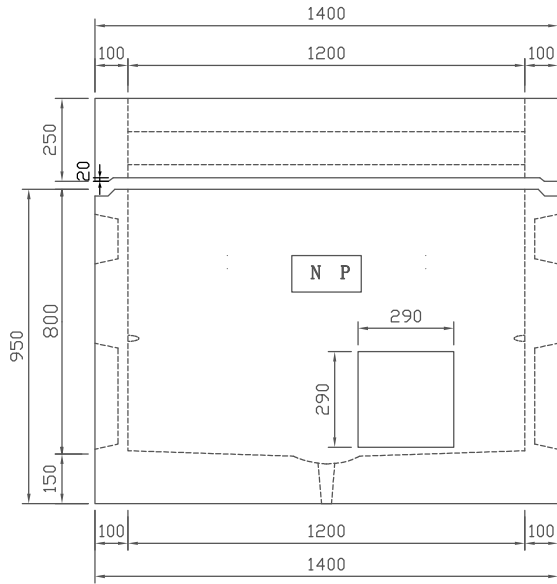
# ハンドホール

CD-S型 参考質量 1610kg



# ハンドホール

**CF型** 参考質量 1666kg



# ハンドホール

CF-S型 参考質量 1705kg

